



General Industry

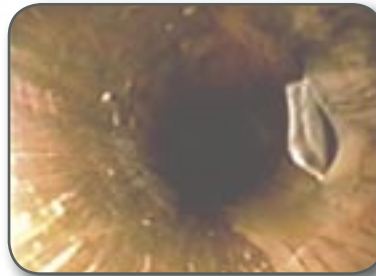


Inspection Services

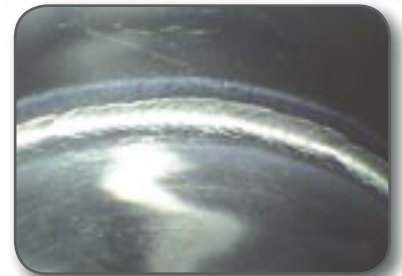
Jamko Technical Solutions, designing and employing the latest in Remote Visual Inspection (RVI) technology, provides a safe and cost effective alternative to component disassembly and unnecessary manned entries. We specialize in RVI, providing inspection services to numerous plants every day.

Jamko's depth of knowledge, skills, and experience can bring previously hidden areas of your plant into view via an assortment of robotic crawlers, video scopes, and pan/tilt zoom cameras. We are able to determine general condition, inspect for blockages and discontinuities, and retrieve foreign objects.

Jamko's inspection services can save countless man-hours as well as provide a margin of safety by minimizing site employees' exposure to hazardous environments. Our skilled technicians are available 24 hours a day, 365 days a year!



▫ Heat Exchanger Inspection



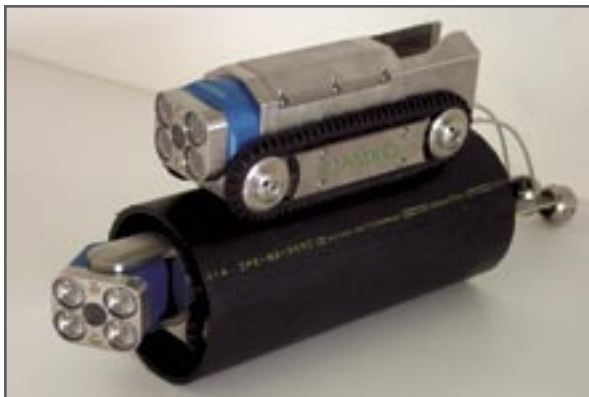
▫ Weld Inspection



▫ Rotating Equipment



▫ Tank Inspection



▫ Jamko Crawler

Common Applications

- Boiler
- Turbine
- Heat Exchanger/Condenser
- Piping/Valve System
- Tanks and Vessels
- Pressure Steam Piping
- Dry Pipe
- Pressurizer
- Steam Generator
- Tray Towers
- Transformers
- Feedwater Heaters
- Pumps & Motors
- Generator
- Nozzles
- Gear Box
- Bus Ducts
- Desuperheaters
- Downcomers
- Refractory
- HVAC
- Underground Piping

Loose Part Retrieval

System failure, component damage, and lost production hours can make loose parts costly for any site. Outfitted with an arsenal of specifically designed retrieval claws, magnets, snares, hooks, pneumatic and robotic grippers, Jamko is equipped for your loose part retrieval application. Whether the foreign debris is a dropped item or a displaced system component, Jamko is prepared to safely and quickly locate and recover the item in the most cost effective manner possible. Jamko's skilled team of trained technicians can be deployed to your site immediately, 24/7.



▫ 8mm Video Scope with gripper



▫ Rag Retrieval



▫ Tape Retrieval



▫ Spray Can Retrieval



▫ Washer Retrieval

Steps for a Successful Remote Visual Inspection and Loose Part Retrieval

Step 1



▫ Locate loose bolt in pipe

Step 2

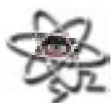


▫ Retrieval magnet deployed

Step 3



▫ Loose bolt retrieved



Jamko Technical Solutions serves the Nuclear PWR, Nuclear BWR, Fossil Power, Process & Petrochemical, and Industrial markets by providing remote visual inspection services (RVI). Utilizing remotely operated pan, tilt, zoom cameras, video scopes, robotic crawlers and a wide range of other equipment, Jamko is able to safely view component deterioration, general condition, and surface defects.

www.jamkosolutions.com

Jamko Technical Solutions, Inc. • 1105 Driving Park Avenue • Newark, New York 14513
Phone: 315.359.9090 • Fax: 315.359.9045 • 1.800.545.0079