



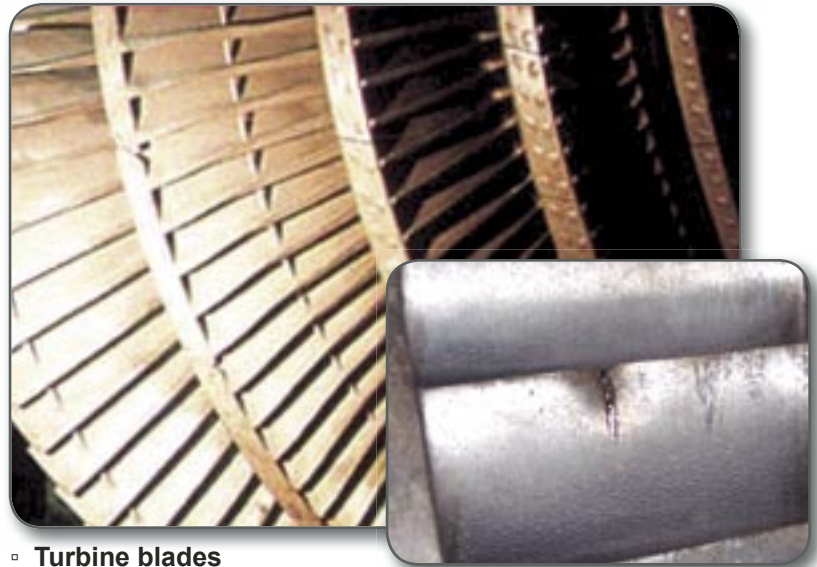
Power Generation



Turbine Inspection Services

Remote Visual Inspection (RVI) is often used to view turbine blades for cracks, distortion, foreign debris, blocked cooling holes, combustion deposits, scale formation, erosion, burning, coating loss, etc. Jamko's team of skilled professionals equipped with the latest in RVI technology can seamlessly perform these inspections providing quality detailed inspection data.

Jamko also specializes in locating and retrieving foreign object debris such as dropped-parts and displaced system components. This service can be performed with the diaphragms removed or in place. In addition to emergency foreign object search and retrieval Jamko offers turbine clean-out services. Prior to turbine assembly, Jamko can inspect all extraction, reheat, and main steam lines. Auxiliary systems such as heat exchanger and turbine oil lines are also easily inspected. Turbine clean-outs have proven to save thousands of hours of downtime, and lost revenue! This service is available 24 hours a day, 365 days a year!



▫ Turbine blades



▫ Loose part retrieval

